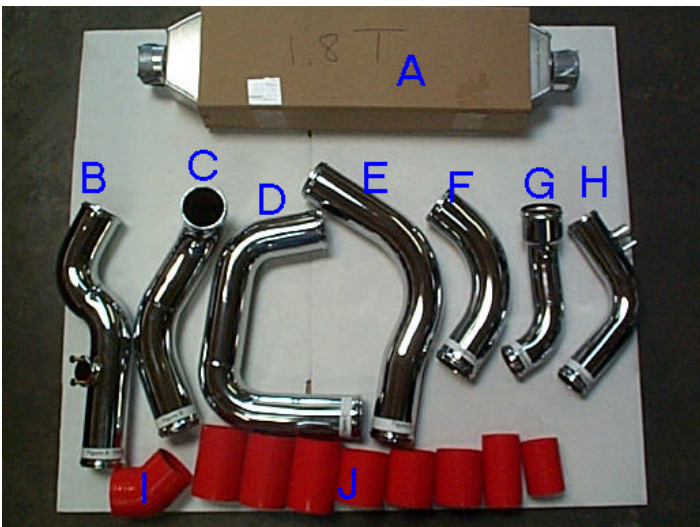


**Procedure:****Installation of the ATP FMIC (Front Mounted Intercooler) kit for the Jetta/Golf/GTI MKIV, 1.8T**

Warning: Some trimming of the bumper assembly is required. In addition, the Golf bumper cover requires a little bit more trimming than the Jetta bumper cover.

**Parts Checklist:**

- A – Intercooler core
- B – Throttle body pipe
- C – Intercooler outlet pipe
- D – Intercooler inlet pipe
- E – Intercooler inlet pipe 2
- F – Intercooler outlet pipe 3
- F – Turbo out outlet pipe 2
- G – Turbo outlet pipe 2
- H – Turbo outlet pipe
- I – Throttle body 45 degree elbow
- J – Straight silicone couplers

**Tools Checklist:**

- Large flathead screwdriver
- Torx drivers size 25
- 13mm socket and ratchet driver
- 10mm socket and ratchet driver
- Grinder with metal cutting wheel
- Cutting knife (use on plastic)

**Other items required:**

- Hose clamps

**Instructions:**

**Remove front grill and bumper cover.**

1. Remove grill by unlatching top clip with large flathead and pull grill assembly forward and away:



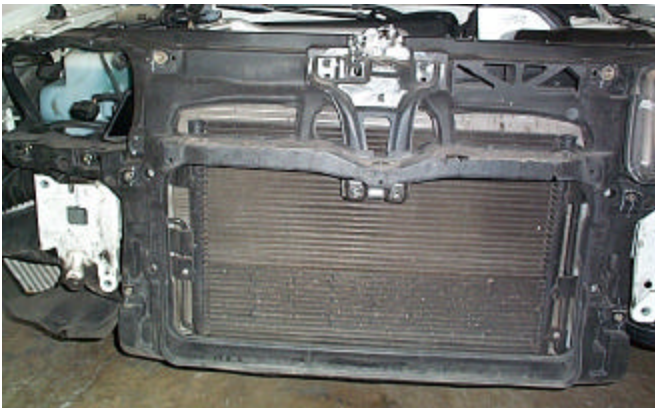
2. Remove Torx screws from bumper cover and behind fender lining.



3. Slide bumper cover forward and remove:

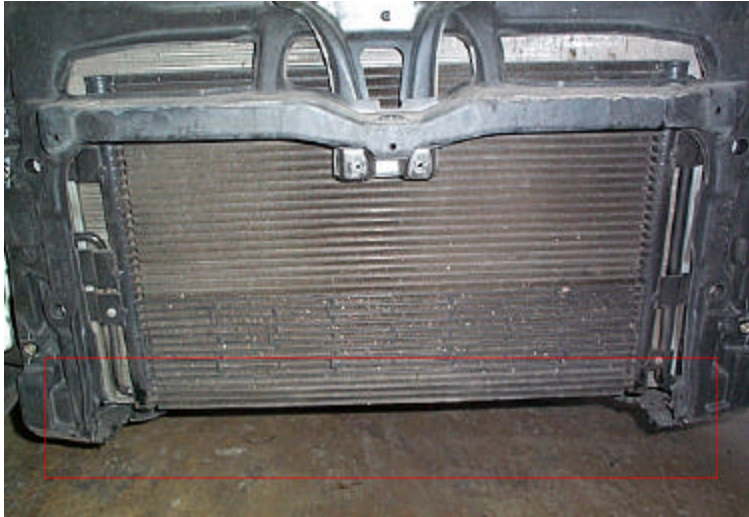


4. Remove foam and unbolt bumper support bar.

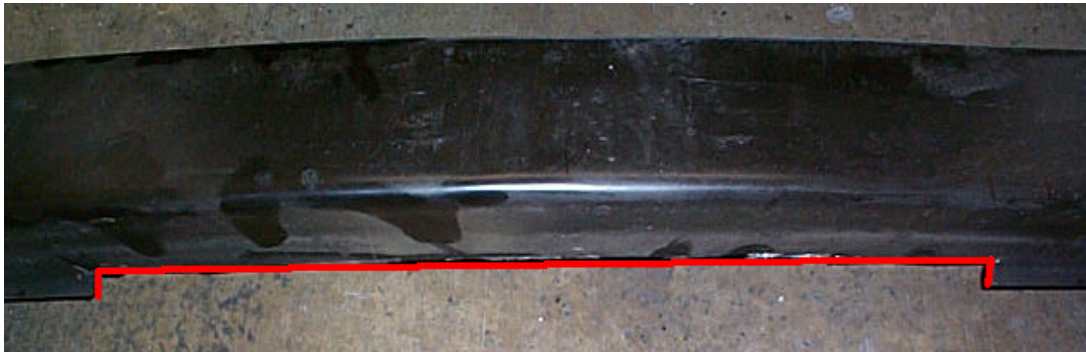




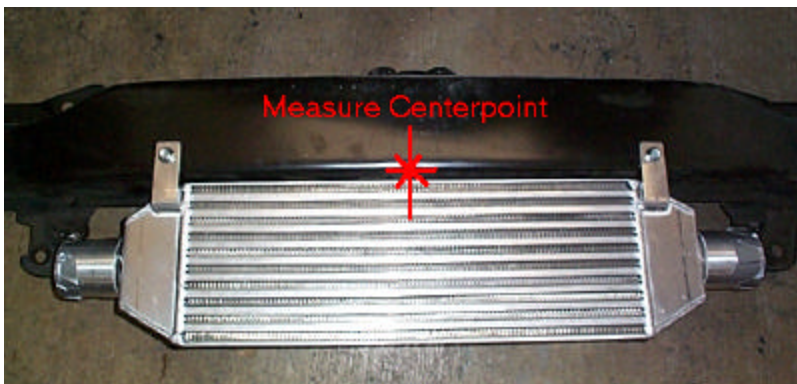
5. On the GOLF ONLY, cut away the lower plastic radiator frame. The objective is to allow the intercooler to sit flush against the A/C condenser (smaller radiator). This minimizes the cutting of the bumper cover.



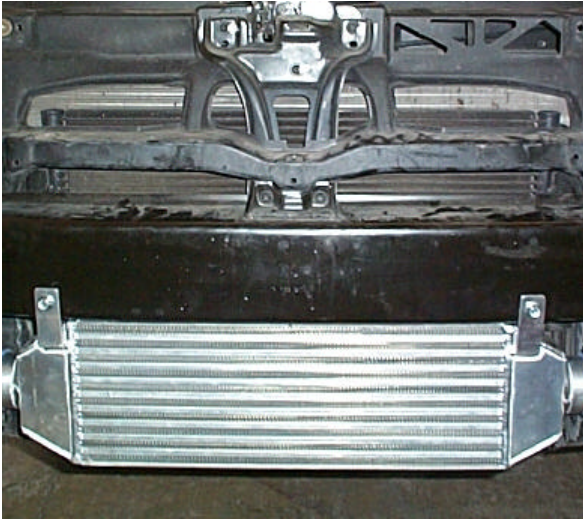
6. Cut away the lower lip on the bumper support bar. This allows the bottom of the intercooler to sit directly above the lip spoiler.



7. Measure the center point of both the intercooler and bumper support bar. Drill 2 holes and bolt intercooler to the bumper support bar. Top of intercooler must sit flush against the bottom of bumper support bar.



8. Reinstall the bumper support bar with intercooler attached. Insure that the intercooler core sits flush against the front of the A/C condenser (smaller radiator).



9. Install pressure sensor onto pipe B. Install pipes B and C to the left passenger side of the intercooler using:





10. Install intercooler outlet pipe. Cut hole through plastic lining to allow pipe to pass through. Bend horns out of the way.



11. Install remaining pipes starting with turbo outlet.



12. Install diverter valve hose and pressure signal onto nipples provided on turbo outlet pipe.

**Reinstall bumper cover:**

1. Test fit bumper cover.



2. Trim inside of bumper cover until cover is able to slip back on.
3. Repeat steps 1 and 2 until bumper cover fits properly and reattach bumper cover.





**Test drive, check for leaks and tighten all clamps.**